

6

AGRICULTURE

Introduction

The 1987-88 season was highlighted by large decreases in the area and production of wheat of 25 per cent and 33 per cent respectively. There was a 38 per cent increase in the area allocated to barley with a 16 per cent increase in production. Despite a 25 per cent increase in the area, production of legumes for grain fell by 19 per cent. Other crops generally recorded declines in yield and production.

Although the number of citrus fruit trees increased, there was a decrease in the production of citrus fruits. Apple production fell 16 per cent while pear production increased by 12 per cent. Stone fruits production generally recorded a significant rise with the exception of cherry production, which experienced an 8 per cent decline. There was a slight decrease in the area of grape vines, however grape production increased by 14 per cent from 288,600 tonnes to 329,200 tonnes.

There was a slight rise in livestock numbers. Meat cattle, sheep and lambs, and pig numbers all increased and the rate of decline in the number of milk cattle diminished. Shorn wool production increased from 124,965 tonnes to 128,217 tonnes.

In 1987-88 the total area of holdings of agricultural establishments slightly exceeded 13 million hectares.

Victoria compared with Australia

In terms of farm income, Victoria's share for the latest 6 year period (1982-83 to 1987-88) fluctuated markedly. In 1987-88, farm income reached a new record of \$1,169m, compared with the previous peak of \$1,112m in 1983-84. The 1987-88 figure represented 26 per cent of the Australian farm income of \$4,496m.

The gross value of agricultural commodities produced (GVACP) provides a measure of the output from farming. In 1987-88, the GVACP for Victoria was \$4,608m, or 23 per cent of the Australian total of \$20,152m. In terms of value, Victoria produced 22 per cent of Australia's crops, 22 per cent of livestock slaughtered, and 27 per cent of livestock products (wool, milk, eggs, and honey).

Scope of the Agricultural Census

Statistics in this publication are, in general, derived from the annual Agricultural Census conducted throughout Australia at 31 March, which collects data from establishments with agricultural activity.

The ABS excludes from the Census establishments with an estimated value of agricultural operations (EVAO) less than a certain cut-off level. This cut-off

level is reviewed from time to time. From 1981-82 to 1985-86 establishments were excluded from the Census if they had, or were expected to have, an EVAO of less than \$2,500. From the 1986-87 Census, the cut-off value has been raised to \$20,000.

EVAO is an aggregation of derived values for all crop and livestock activity for each unit. It should be noted that EVAO is applicable *only for Industry Coding and Size Valuation purposes*. It is NOT an indicator of receipts obtained by units nor of the value of agricultural commodities produced by these units.

TABLE 6.1 AUSTRALIAN NATIONAL ACCOUNTS: GROSS DOMESTIC PRODUCT AT FACTOR COST, AGRICULTURE, FORESTRY, FISHING, AND HUNTING INDUSTRY

Year	Gross Domestic Product at factor cost		
	Victoria	Australia	Victoria as a percent-age of Australia
	\$m	\$m	per cent
1982-83	1,183	5,723	20.7
1983-84	2,168	9,025	24.0
1984-85	1,829	9,019	20.3
1985-86	1,950	9,101	21.4
1986-87	2389	10,179	23.5
1987-88	n.a	12,144	n.a

TABLE 6.2 AUSTRALIAN NATIONAL ACCOUNTS: FARM INCOME

Year	Victoria	Australia	Victoria as a percent-age of Australia
	\$m	\$m	per cent
1982-83	208	765	27.2
1983-84	1,112	3,579	31.1
1984-85	600	3,155	19.0
1985-86	546	2,044	26.7
1986-87	877	2,588	33.9
1987-88	1,169	4,496	26.0

TABLE 6.3 VALUE OF AGRICULTURAL COMMODITIES PRODUCED, VICTORIA
(\$'000)

Particulars	Year ended 30 June					
	1983	1984	1985	1986	1987	1988
Crops -						
Cereals for grain	99,999	814,819	588,176	480,321	r525,136	421,509
Hay	177,855	311,638	82,103	143,698	181,003	148,406
Industrial crops	23,443	34,465	35,776	33,091	34,329	48,562
Vegetables	139,223	197,641	158,496	185,605	227,351	255,994
Grapes	107,143	93,116	114,014	123,000	117,776	149,323
Fruit	114,722	113,962	151,554	154,030	203,604	202,101
Other	81,430	93,592	131,078	158,528	r186,862	269,598
Total	743,815	1,659,233	1,261,197	1,278,273	r1,476,061	1,495,493
Livestock slaughtering and other disposals -						
Cattle and calves	467,670	432,670	484,082	520,269	561,154	570,499
Sheep and lambs	154,688	182,611	179,647	178,677	r259,275	270,033
Other	211,632	219,695	258,121	251,327	r249,424	294,405
Total	833,989	834,804	921,851	950,273	r1,069,853	1,134,937
Livestock products -						
Wool	324,133	381,858	502,306	542,076	r726,259	1,144,831
Dairy products	615,000	589,062	473,360	557,935	r643,778	747,811
Other	71,097	86,019	84,685	84,637	86,327	84,633
Total	1,010,230	1,056,939	1,060,351	1,184,647	r1,456,364	1,977,275
Grand total	2,588,035	3,550,977	3,243,399	3,413,193	r4,002,278	4,607,705

TABLE 6.4 GROSS VALUE OF AGRICULTURAL COMMODITIES PRODUCED 1987-88
(\$'000)

	Victoria	Australia	Victoria as a percentage of Australia
Crops -			
Cereals for Grain	421,500	3,072,800	13.7
Hay	148,400	426,500	34.7
Industrial Crops	48,600	1,281,700	3.7
Vegetables	256,000	952,900	26.8
Grapes	149,300	353,700	42.2
Fruit	202,100	886,000	22.8
Other	269,600	838,400	32.1
Total	1,495,500	7,812,000	19.1
Livestock Slaughtering and other disposals -			
Cattle and Calves	570,500	3,057,000	18.6
Sheep and Lambs	270,000	803,900	33.5
Other	294,400	1,213,400	24.2
Total	1,134,900	5,074,300	22.3
Livestock Products -			
Wool	1,144,800	5,516,600	20.7
Dairy Products	747,800	1,390,900	53.7
Other	84,600	348,700	24.2
Total	1,977,300	7,256,200	27.2
Grand total	4,607,700	20,143,500	22.8

TABLE 6.5 NUMBER OF ESTABLISHMENTS, WITH AGRICULTURAL ACTIVITY, AREA, AND LAND UTILISATION, BY STATISTICAL DIVISION 1987-88

Statistical division	Number of establishments (a)	Area used for crops(b)(c)	Sown pasture and lucerne	Native pasture	Balance of establishments	Total area of establishments
		'000 ha	'000 ha	'000 ha	'000 ha	'000 ha
Melbourne	1,712	20	100	33	44	197
Barwon	1,620	45	266	74	64	448
South Western	4,912	53	1,294	235	166	1,748
Central Highlands	1,785	70	484	136	87	777
Wimmera	3,353	785	876	208	502	2,371
Northern Mallee	3,655	693	531	398	853	2,475
Loddon-Campaspe	3,247	279	670	267	256	1,502
Goulburn	4,988	150	720	225	170	1,265
North Eastern	1,912	42	295	112	254	703
East Gippsland	1,222	8	224	270	469	971
Central Gippsland	3,517	10	421	54	57	542
East Central	765	4	60	11	11	86
Total Victoria	32,688	2,154	5,970	2,024	2,934	13,086

(a) Includes non land-based bee keeping establishments (i.e. bee keeping activity not permanently located at one site).

(b) Excludes area of pasture cut for hay or seed.

(c) Duplicated area included if double-cropping occurred.

TABLE 6.6 NUMBER OF ESTABLISHMENTS WITH AGRICULTURAL ACTIVITY, CLASSIFIED BY EVAO AND MAIN ACTIVITY OF ESTABLISHMENT, BY STATISTICAL DIVISION, VICTORIA, 1987-88 (a)

Main activity of establishment	Estimated value of agricultural operations (EVAO) (\$'000)						Total estab- lish- ments
	<20	20-39	40-59	60-99	100-199	200+	
MELBOURNE STATISTICAL DIVISION							
Meat cattle	48	119	59	42	15	3	321
Vegetables	16	34	33	61	88	89	286
Orchard and other fruit	19	45	24	42	52	32	214
Nurseries	11	41	21	45	45	48	211
Poultry	3	8	11	26	31	61	140
Potatoes	1	3	4	1	14	11	34
Other	56	114	104	122	83	27	506
Total	154	364	256	339	328	271	1,712
BARWON STATISTICAL DIVISION							
Milk cattle	9	44	88	258	171	28	598
Sheep	20	84	81	108	74	44	411
Meat cattle	21	62	26	25	10	3	147
Other	40	77	73	89	101	84	464
Total	90	267	268	480	356	159	1,620
SOUTH WESTERN STATISTICAL DIVISION							
Sheep	32	163	328	580	602	243	1,948
Milk cattle	12	107	258	750	469	67	1,663
Sheep and meat cattle	7	70	77	141	182	140	617
Meat cattle	60	198	97	59	44	14	472
Other	15	30	20	46	60	41	212
Total	126	568	780	1,576	1,357	505	4,912

TABLE 6.6 NUMBER OF ESTABLISHMENTS WITH AGRICULTURAL ACTIVITY, CLASSIFIED BY EVAO AND MAIN ACTIVITY OF ESTABLISHMENT, BY STATISTICAL DIVISION, VICTORIA, 1987-88 (a) - continued

Main activity of establishment	Estimated value of agricultural operations EVAO (\$'000)						Total establish- ments
	<20	20-39	40-59	60-99	100-199	200+	
CENTRAL HIGHLANDS STATISTICAL DIVISION							
Sheep	12	155	183	281	293	109	1033
Sheep and cereals	1	21	15	44	44	26	161
Potatoes	1	14	12	26	51	57	151
Sheep and meat cattle	2	39	38	30	16	22	147
Meat cattle	13	41	10	8	5	-	77
Other	25	43	37	47	41	23	216
Total	54	313	295	436	450	237	1,785
WIMMERA STATISTICAL DIVISION							
Cereal grains	35	123	139	243	317	138	1,464
Sheep and cereals	22	128	199	389	533	193	995
Sheep	35	105	136	202	160	54	692
Other	36	26	36	31	46	27	202
Total	128	382	510	865	1,056	412	3,353
NORTHERN MALLEE STATISTICAL DIVISION							
Grapes	53	203	352	507	303	59	1,477
Cereal grains	23	55	62	114	223	207	684
Sheep and cereals	3	38	59	138	276	158	672
Orchard and other fruit	13	28	32	34	52	43	202
Other	81	103	111	150	118	57	620
Total	173	427	616	943	972	524	3,655
LODDON-CAMPASPE STATISTICAL DIVISION							
Sheep and cereals	11	109	131	240	266	84	841
Milk cattle	5	34	104	352	225	28	749
Sheep	29	160	165	197	159	39	748
Meat cattle	27	82	33	28	12	5	187
Sheep and meat cattle	7	36	40	40	36	7	166
Pigs	3	6	5	14	27	29	84
Other	75	92	61	76	101	67	472
Total	157	519	539	947	826	259	3,247
GOULBURN STATISTICAL DIVISION							
Milk cattle	23	87	363	915	418	45	1,851
Sheep and cereals	18	75	120	175	129	21	538
Meat cattle	86	206	90	82	30	8	502
Sheep and meat cattle	13	98	110	124	95	30	470
Orchard and other fruit	12	21	36	56	111	136	372
Cereal grains	23	24	10	9	15	1	82
Meat cattle and cereals	11	12	10	14	9	-	56
Other	77	239	219	268	179	135	1,117
Total	263	762	958	1,643	986	376	4,988

TABLE 6.6 NUMBER OF ESTABLISHMENTS WITH AGRICULTURAL ACTIVITY, CLASSIFIED BY EVAO AND MAIN ACTIVITY OF ESTABLISHMENT, BY STATISTICAL DIVISION, VICTORIA, 1987-88 (a) - continued

Main activity of establishment	Estimated value of agricultural operations EVAO (\$'000)						Total estab- lish- ments
	<20	20-39	40-59	60-99	100-199	200+	
NORTH EASTERN STATISTICAL DIVISION							
Meat cattle	58	264	159	120	47	11	659
Milk cattle	4	30	64	154	112	13	377
Sheep and meat cattle	9	65	48	74	45	13	254
Tobacco	-	7	14	34	81	45	181
Other	47	71	76	116	93	38	441
Total	118	437	361	498	378	124	1,912
EAST GIPPSLAND STATISTICAL DIVISION							
Milk cattle	1	19	56	142	118	25	361
Meat cattle	40	132	66	50	27	3	318
Sheep and meat cattle	3	37	49	50	62	14	215
Other	16	60	66	76	62	48	328
Total	60	248	237	318	269	90	1,222
CENTRAL GIPPSLAND STATISTICAL DIVISION							
Milk cattle	21	146	383	861	552	78	2,041
Meat cattle	114	338	146	129	74	21	822
Other	47	101	96	145	167	100	653
Total	180	585	625	1,135	793	199	3,517
EAST CENTRAL STATISTICAL DIVISION							
Milk cattle	5	40	56	117	63	4	285
Meat cattle	32	88	42	34	16	2	214
Other	16	36	36	59	69	50	266
Total	53	164	132	210	148	56	765

(a) The period covered in this and most subsequent tables in this Chapter is the 1987-88 season, which in general refers to the year ended 31 March 1988 but also includes activities which may have been finalised after 31 March (e.g. grape picking). In most of these activities the growing period occurred before 31 March.

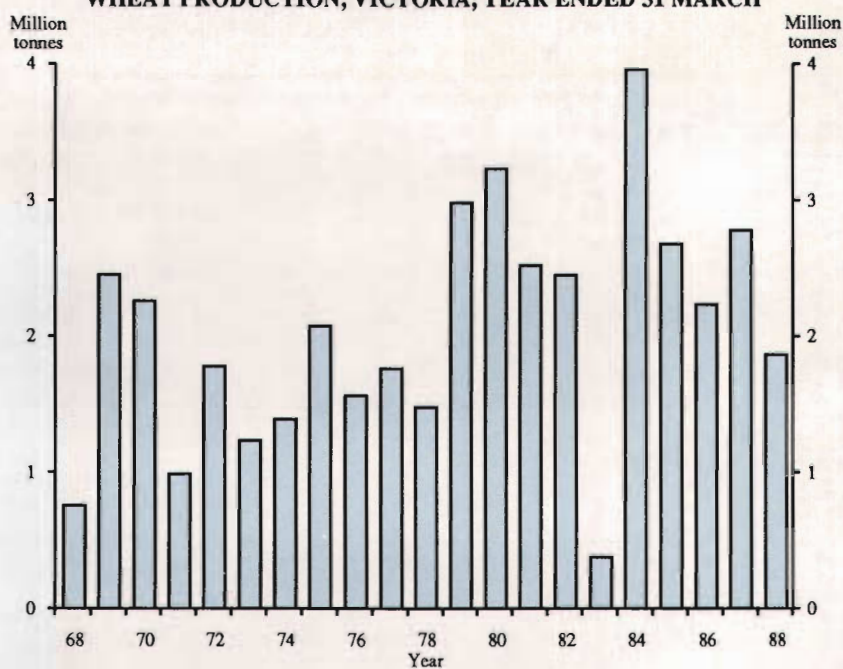
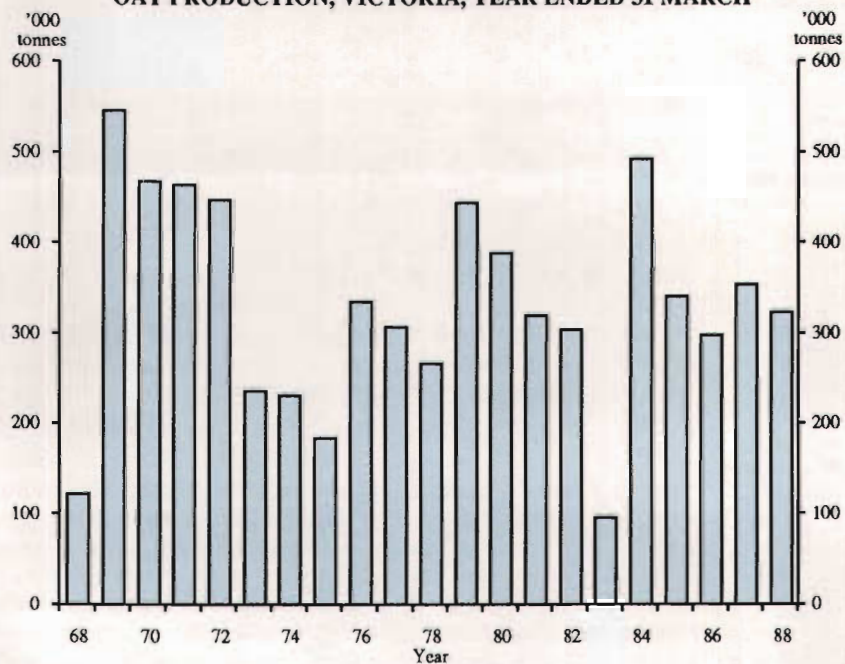
AGRICULTURAL COMMODITIES

Field crops

The cereals wheat, oats, and barley are the principal field crops in Victoria. These, together with hay production, green feed, and silage, represent about 80 per cent of the total area sown, although there is some variation from year to year.

Wheat

Wheat is Victoria's largest crop in terms of area and production. The average area sown in the six-year period 1982-83 to 1987-88 was 1.4 million hectares, about 54 per cent of the State's total area under crops. Over the same period production has averaged 2.3 million tonnes, ranging from a drought reduced 0.4 million tonnes in 1982-83 to a record 4.0 million tonnes in 1983-84. In Victoria, wheat remained a significant crop in 1987-88, representing 40 per cent of total crop production. The value of wheat produced in Victoria amounted to \$410m in 1987-88.

WHEAT PRODUCTION, VICTORIA, YEAR ENDED 31 MARCH**OAT PRODUCTION, VICTORIA, YEAR ENDED 31 MARCH**

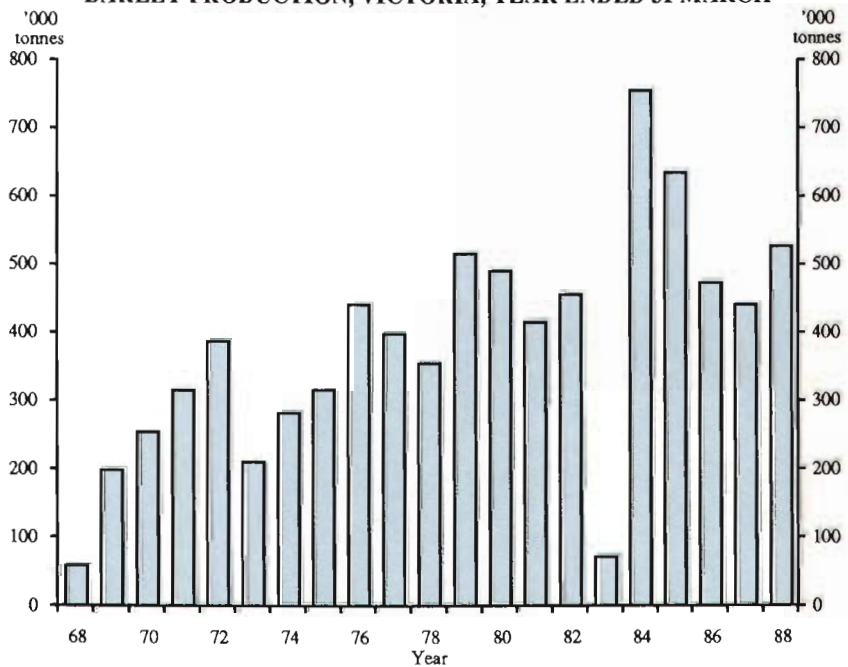
Oats

Oats are sown for grain production, winter grazing, and hay production. The average annual area sown for grain, grazing, and hay between 1982-83 and 1987-88 was 315,900 hectares, of which about 74 per cent was harvested for grain, some of it after being grazed during the winter. Most of the oats produced in Victoria is held on farms or used as stock feed, especially during periods of seasonal shortage or in drought conditions. About 7 per cent of the crop goes to mills, but only a small fraction of this is processed for human consumption. The bulk of the 'milled' oats is destined for incorporation in proprietary stock feeds or as unkilned groats for export. The remainder of the crop is exported as grain.

Barley

The area sown to barley for all purposes in 1987-88 was 370,700 hectares, slightly higher than the 6 year average of 370,400 hectares. While barley is grown in all statistical divisions, production has been traditionally centred in two distinct areas where high quality grain is produced. The largest production is in the south-west of the Northern Mallee and the adjacent north-western Wimmera. The second source of high quality barley grain is in an area between Melbourne, Geelong, and Bacchus Marsh in southern Victoria.

BARLEY PRODUCTION, VICTORIA, YEAR ENDED 31 MARCH



Maize

The total area of maize for grain increased from 602 hectares in the drought year of 1982-83 to 1,328 hectares in 1987-88. Production rose from 2,449 tonnes in 1982-83 to 5,503 tonnes in 1987-88.

Oil seeds

The production of rapeseed increased from 1,000 tonnes in 1982-83 to 25,000 tonnes in 1985-86, before falling to 23,000 tonnes in 1987-88. However during the six year period, yields were the highest in 1986-87. Safflower production showed further growth in 1987-88 to reach 14,000 tonnes, while the area sown increased to 20,800 hectares.

Grain legumes

The legumes, predominantly field peas and lupins for grain, have shown strong growth in recent years. Since 1973, the area of lupins sown has risen from about 100 hectares to over 37,000 hectares in 1987-88.

The production of field peas decreased to 258,500 tonnes in 1987-88. This followed the record harvest of 334,800 tonnes in 1986-87. The area sown to field peas has risen from an average of around 20,000 hectares per annum in the decade to 1983-84, to over 236,000 hectares in 1987-88.

TABLE 6.7 WHEAT FOR GRAIN, VICTORIA

<i>Season</i>	<i>Area</i>	<i>Production</i>	<i>Average yield per hectare</i>	<i>A.S.W.(a) wheat standard</i>
	'000 ha	'000 tonnes	tonnes	kg/hl
1982-83	1,327	394	0.30	83.0
1983-84	1,614	3,971	2.46	76.7
1984-85	1,523	2,666	1.75	84.1
1985-86	1,508	2,250	1.49	80.9
1985-86 (b)	1,488	2,225	1.56	80.9
1986-87	1,364	2,795	2.05	80.2
1987-88	1,026	1,882	1.84	82.7

(a) Australian Standard White, quoted in kilograms per hectolitre.

(b) To assist in gauging the degree of change of the effect of raising the EVAO cut-off from \$2,500 or more to \$20,000 or more, data for 1985-86 have been tabulated on both bases.

TABLE 6.8 OATS FOR GRAIN, VICTORIA

<i>Season</i>	<i>Area</i>	<i>Production</i>	<i>Average yield per hectare</i>
	'000 ha	'000 tonnes	tonnes
1982-83	213	98	0.46
1983-84	324	494	1.52
1984-85	228	343	1.50
1985-86	212	300	1.42
1985-86 (a)	204	290	1.43
1986-87	215	356	1.66
1987-88	216	325	1.51

(a) See footnote (b) to Table 6.7.

TABLE 6.9 BARLEY FOR GRAIN, VICTORIA

Season	Area		Production		Average yield per hectare	
	2-row	6-row	2-row	6-row	2-row	6-row
	'000 ha		'000 tonnes		tonnes	
1982-83	269	9	71	3	0.27	0.34
1983-84	390	13	736	22	1.89	1.69
1984-85	470	15	617	20	1.31	1.34
1985-86	379	10	464	12	1.22	1.26
1985-86(a)	370	9	453	11	1.22	1.25
1986-87	259	6	433	11	1.67	1.68
1987-88	357	9	517	12	1.45	1.34

(a) See footnote (b) to Table 6.7.

TABLE 6.10 OTHER CEREAL CROPS FOR GRAIN

Season	Rye		Maize		Millet		Triticale	
	Area	Production	Area	Production	Area	Production	Area	Production
	'000 ha	'000 tonnes	'000 ha	'000 tonnes	'000 ha	'000 tonnes	'000 ha	'000 tonnes
1982-83	3.9	0.9	0.6	2.4	2.3	3.1	5.8	2.1
1983-84	7.1	5.3	0.9	5.0	3.3	4.8	7.6	14.2
1984-85	5.4	3.3	1.2	6.3	1.9	2.9	8.9	13.6
1985-86	10.0	5.9	1.1	5.0	1.7	2.6	11.9	18.6
1985-86 (a)	10.0	5.9	1.0	5.0	1.6	2.5	11.7	18.4
1986-87	22.8	19.0	0.6	3.2	2.8	4.5	17.6	28.5
1987-88	11.6	6.8	1.3	5.5	1.4	2.1	18.3	27.4

(a) See footnote (b) to Table 6.7.

TABLE 6.11 SILAGE MADE, AND FARM STOCKS OF SILAGE AND HAY, BY STATISTICAL DIVISION

(tonnes)

Statistical division	Silage made, season 1987-88	Stocks at 31 March 1988	
		Silage	Hay
Melbourne	12,411	5,365	56,498
Barwon	26,849	18,685	139,080
South Western	61,414	31,447	426,909
Central Highlands	10,698	10,297	178,385
Wimmera	5,055	3,590	191,550
Northern Mallee	5,019	4,392	92,500
Loddon-Campaspe	35,339	27,309	284,203
Goulburn	31,756	16,035	408,483
North Eastern	18,035	25,735	129,028
East Gippsland	7,827	10,280	65,474
Central Gippsland	89,462	35,379	277,661
East Central	10,599	5,025	45,526
Total Victoria	314,464	193,540	2,295,297

TABLE 6.12 HAY PRODUCTION, VICTORIA, SEASON 1987-88

<i>Variety</i>	<i>Area</i>	<i>Production</i>	<i>Average yield per hectare</i>
	hectares	tonnes	tonnes
Meadow grass and clover	309,437	1,164,637	3.76
Oaten	35,102	122,120	3.48
Lucerne	26,764	148,773	5.56
Wheaten	5,283	16,168	3.06
Barley and other	2,228	6,220	2.79
Total	378,814	1,457,918	3.85

TABLE 6.13 SELECTED OILSEEDS PRODUCTION, VICTORIA

<i>Season</i>	<i>Area (hectares)</i>	<i>Production (tonnes)</i>	<i>Average yield per hectare (tonnes)</i>
LINSEED			
1982-83	2,067	942	0.46
1983-84	1,973	1,510	0.77
1984-85	1,791	2,222	1.24
1985-86	3,399	5,346	1.57
1985-86 (a)	3,374	5,325	1.58
1986-87	2,618	2,926	1.12
1987-88	4,040	4,336	1.07
RAPSEED			
1982-83	3,822	1,227	0.32
1983-84	4,258	4,161	0.98
1984-85	8,592	8,711	1.01
1985-86	21,785	24,543	1.13
1985-86 (a)	21,670	24,434	1.13
1986-87	18,117	21,699	1.20
1987-88	21,080	22,730	1.08
SAFFLOWER			
1982-83	1,305	791	0.38
1983-84	3,619	2,610	0.72
1984-85	7,038	4,569	0.65
1985-86	9,432	6,264	0.66
1985-86 (a)	9,174	6,136	0.67
1986-87	10,448	7,425	0.71
1987-88	20,878	14,467	0.69
SUNFLOWER			
1982-83	1,170	790	0.68
1983-84	14,105	12,546	0.89
1984-85	12,355	14,407	1.17
1985-86	13,240	14,894	1.12
1985-86 (a)	12,806	14,297	1.12
1986-87	7,359	8,019	1.09
1987-88	4,161	7,234	1.74

(a) See footnote (b) to Table 6.7.

TABLE 6.14 LEGUMES FOR GRAIN, VICTORIA

Season	Lupins		Field peas		Total (a)	
	Area	Production	Area	Production	Area	Production
	'000 ha	'000 tonnes	'000 ha	'000 tonnes	'000 ha	'000 tonnes
1982-83	21.0	4.4	64.7	3.2	85.8	7.7
1983-84	16.2	15.8	45.6	61.4	62.0	77.5
1984-85	20.1	20.7	84.8	86.3	105.7	107.7
1985-86	24.2	30.4	136.7	137.0	161.9	168.6
1985-86 (b)	23.5	29.7	135.9	136.5	160.4	167.3
1986-87	27.6	37.2	197.8	334.8	232.5	384.7
1987-88	37.2	35.2	236.8	258.5	289.8	311.2

(a) Includes chick peas, dried edible beans, etc.

(b) See footnote (b) to Table 6.7.

TABLE 6.15 AREA, PRODUCTION, AND YIELD OF LEGUMES FOR GRAIN, BY STATISTICAL DIVISION, YEAR ENDED 31 MARCH 1988

Statistical division	Lupins for grain			Field peas for grain			Total legumes for grain (a)		
	Area	Prod'n	Yield	Area	Prod'n	Yield	Area	Prod'n	Yield
	'000 ha	'000 tonnes	tonnes /ha	'000 ha	'000 tonnes	tonnes /ha	'000 ha	'000 tonnes	tonnes /ha
Melbourne	0.4	0.2	0.48	0.1	0.1	1.55	0.5	0.3	0.68
Barwon	1.3	1.3	1.02	1.4	2.4	1.65	2.7	3.7	1.35
South Western	1.3	1.7	1.36	0.5	0.5	1.07	1.8	2.3	1.28
Central Highlands	0.8	1.0	1.21	0.6	0.7	1.30	1.4	1.7	1.24
Wimmera	9.1	7.0	0.76	136.5	150.1	1.10	158.1	170.7	1.08
Northern Mallee	3.1	1.9	0.62	64.1	65.8	1.03	68.4	68.9	1.01
Loddon-Campaspe	4.1	4.2	1.03	29.5	34.1	1.15	35.1	40.5	1.15
Goulburn	12.4	13.0	1.05	3.9	4.5	1.15	16.4	17.6	1.07
North Eastern	4.7	4.9	1.05	0.3	0.3	0.88	5.0	5.2	1.04
East Gippsland	0.1	-	0.49	-	-	-	0.3	0.3	1.13
Central Gippsland	-	-	0.82	-	-	2.10	-	-	1.02
Total Victoria	37.2	35.2	0.95	236.8	258.5	1.09	289.8	311.2	1.07

(a) Includes chick peas, dried edible beans, etc.

FRUIT

Area planted

In Victoria in 1987-88, the area planted with fruit, nuts, and berries was 20,194 hectares, and the area of vineyards was 18,763 hectares. Although this total of 38,957 hectares is only about 1.8 per cent of the total area under crops in Victoria, fruit and vine growing make a valuable contribution to the economy of the State.

Tree fruit

In Victoria, the main fruit growing areas are in the Goulburn, Northern Mallee, Melbourne, and East Central Statistical Divisions. There are smaller areas in the North Eastern Statistical Division and also in the Gippsland, Bacchus Marsh, and Ballarat areas.

Small fruit

Climatic requirements have restricted the commercial production of strawberries, and cane and bramble fruits in particular, to the cooler southern regions of Victoria, and most of the fruit is grown in the hills of the Eastern Melbourne Metropolitan and Mornington Peninsula areas which are relatively close to the Melbourne market. During the last few years fruit growers in other parts of the State interested in diversification have taken up the production of strawberries, raspberries and kiwi fruit, particularly for the fresh fruit market.

Nuts

A wide range of nuts can be grown in Victoria. Examples are almonds, walnuts, chestnuts, hazelnuts, pecans, and pistachios. In the past, only a few of these trees have been grown in commercial plantings. Almonds were mainly planted in the northern area; walnuts and chestnuts in situations with deep soil in the north-east, the Dandenongs, and Gippsland; and hazelnuts on shallower soils in the north-east and the Dandenongs. In 1987-88, production of nuts was 1,762 tonnes.

Grapes

In Victoria, most wine grapes are grown under irrigation in the Northern Mallee Statistical Division, and in the Goulburn Valley and the Murray Valley areas. Wine grape varieties are also being grown in the traditional non-irrigated areas in the north-east (Rutherglen) and in the west (Great Western) of the State. With the increasing interest in wine grapes over recent years, many vineyards of varying sizes have been established in other suitable areas throughout the State.

In 1987-88, Victoria had 17,591 hectares of bearing vines which produced 78,407 tonnes for winemaking and 250,789 tonnes for drying and table grapes. There were 1,172 hectares of non-bearing vines.

Table grape production in recent years has increased considerably, with sales of Victorian table grapes on local and export markets increasing to 30,000 tonnes over the past five years.

OTHER INTENSIVE CROPS**Vegetables**

Most of the fresh vegetable production in Victoria is located adjacent to the Melbourne urban area at Werribee and Keilor to the west, and Narre Warren, Clyde, and Keysborough in the sandy south-eastern area.

Potatoes are mainly grown in the Central Highlands around Ballarat, at Thorpdale in the Gippsland Hills, and at Kooweerup, with additional areas around Warrnambool, the Bellarine Peninsula, Colac, the Otway Ranges, and metropolitan market gardens. In 1987-88, the gross value of potato production was \$105m or 7 per cent of the total value of production of crops.

The tomato industry in Victoria is predominantly processing-orientated with most of the crop produced in the irrigated areas between Shepparton and Rochester in northern Victoria.

Tobacco

The tobacco industry in Victoria is centred at Myrtleford in the north-east with production areas in the adjacent valleys of the Buffalo, Ovens, Upper King, and Kiewa Rivers. The 193 tobacco growers in Victoria produced 5,102 tonnes of cured leaf in 1987-88.

Hops

In Victoria, production of hops is confined to the alluvial soils in the valleys of the Ovens and King Rivers where good quality irrigation water is available to supplement the natural summer rainfall. The hop is a summer growing perennial plant, propagated from root cuttings, that develops long vines supported on a post and wire trellis system about six metres above the ground surface. In 1987-88 there were 24 hop gardens in Victoria with a total area of 382 hectares producing 695 tonnes (dried weight) of hops for both domestic brewers and export markets.

Plant nurseries

In 1987-88, there were 396 nurseries in Victoria with a total production area of 2,656 hectares (including establishments growing cultivated turf).

TABLE 6.16 NUMBER OF SELECTED BEARING AND NON BEARING POME AND STONE FRUIT TREES BY STATISTICAL DIVISION, AT 31 MARCH 1988
(‘000)

<i>Statistical division</i>	<i>Apples</i>	<i>Pears</i>	<i>Peaches</i>	<i>Apricots</i>	<i>Nectarines</i>
Melbourne	535	62	98	2	36
Barwon	1	-	1	1	-
South Western	11	-	1	1	-
Central Highlands	115	17	6	6	8
Wimmera	2	1	3	1	-
Northern Mallee	4	1	41	62	85
Loddon-Campaspe	157	23	-	-	-
Goulburn	438	1,198	615	158	40
North Eastern	150	1	5	1	1
East Gippsland	3	-	-	-	-
Central Gippsland	49	4	4	-	3
East Central	143	7	10	-	8
Total Victoria	1,610	1,314	785	232	182

TABLE 6.17 NUMBER OF SELECTED BEARING AND NOT BEARING CITRUS TREES BY STATISTICAL DIVISION, AT 31 MARCH 1988
(‘000)

<i>Statistical division</i>	<i>Oranges</i>	<i>Lemons and limes</i>	<i>Mandarins</i>
Melbourne	-	9	-
Barwon	-	-	-
South Western	-	-	-
Central Highlands	-	-	-
Wimmera	-	-	-
Northern Mallee	921	45	79
Loddon-Campaspe	-	-	-
Goulburn	84	22	1
North Eastern	12	4	-
East Gippsland	-	-	-
Central Gippsland	-	-	-
East Central	-	2	-
Total Victoria	1,016	83	80

TABLE 6.18 ORCHARD FRUIT PRODUCTION, VICTORIA
(tonnes)

Type of fruit	Year ended 31 March -						
	1983	1984	1985	1986	1986(a)	1987	1988
Pears	98,712	97,150	114,087	120,933	120,638	123,859	138,814
Apples	77,526	64,379	92,379	85,404	84,902	99,801	83,451
Peaches	34,702	23,824	32,232	31,691	31,355	31,491	38,061
Apricots	7,302	5,857	5,936	7,682	7,297	6,365	8,567
Cherries	1,705	1,130	1,170	1,198	1,121	1,193	1,092
Plums and prunes	2,810	2,574	2,702	2,877	2,664	2,865	3,150
Olives	226	938	810	690	690	43	111
Nectarines	1,816	1,544	1,696	1,975	1,914	2,074	2,536
Quinces	(b)	111	48	41	36	33	23
Figs	(b)	1	4	3	2	2	5
Oranges -							
Valencias	32,936	31,192	37,695	40,008	39,303	47,132	40,680
Navels	17,117	16,051	19,470	20,481	20,145	20,572	22,094
Other	468	314	194	255	255	324	380
Lemons and limes	5,349	4,134	8,098	8,466	8,257	7,454	6,363
Grapefruit	4,913	5,071	5,237	6,837	6,772	6,033	6,801
Mandarins	2,509	2,933	3,278	2,652	2,571	3,080	2,783

(a) See footnote (b) to Table 6.7.

(b) Not collected.

TABLE 6.19 SMALL FRUIT PRODUCTION, VICTORIA
(kilograms)

Type of fruit	Year ended 31 March -						
	1983	1984	1985	1986	1986(a)	1987	1988
Strawberries	1,055,270	1,443,800	1,481,776	1,475,457	1,430,480	1,619,267	1,747,881
Raspberries	204,430	154,622	255,031	215,712	207,053	312,030	320,055
Kiwi Fruit	(b)	80,600	103,304	239,193	237,643	567,504	860,870
Blueberries	(b)	(a)	12,988	30,471	16,489	21,374	30,893
Gooseberries	(b)	2,500	3,324	3,358	288	400	650
Loganberries	(b)	6,782	5,280	6,680	6,680	3,585	9,128
Other berries	(b)	(a)	50,989	56,571	52,361	135,651	100,111
Passionfruit	(b)	(a)	800	900	800	213	-

(a) See footnote (b) to Table 6.7.

(b) Not collected.

TABLE 6.20 NUT PRODUCTION, VICTORIA
(kilograms)

Type of fruit	Year ended 31 March -						
	1983	1984	1985	1986	1986(a)	1987	1988
Walnuts	(b)	71,550	71,626	78,858	74,224	68,296	47,858
Chestnuts	(b)	35,796	46,981	49,981	27,769	28,525	52,619
Almonds	603,900	621,747	597,157	871,721	864,136	1,161,347	1,655,376
Hazelnuts	(b)	15,005	34,437	22,580	1,438	3,015	20

(a) See footnote (b) to Table 6.7.

(b) Not collected.

TABLE 6.21 VITICULTURE, AREA AND PRODUCTION, VICTORIA

Season	Area (hectares)		Production (tonnes) for -	
	Bearing	Non-bearing	Wine making	Drying and table (a)
1982-83	18,976	1,365	64,900	254,117
1983-84	18,806	1,321	82,973	259,160
1984-85	19,132	1,352	96,807	255,631
1985-86	18,720	1,305	68,761	290,652
1985-86 (b)	18,412	1,240	68,086	288,376
1986-87	17,827	1,127	67,133	221,482
1987-88	17,591	1,172	78,407	250,789

(a) Production for drying is estimated as fresh weight equivalent of dried weight.

(b) See footnote (b) to Table 6.7.

TABLE 6.22 VEGETABLES FOR HUMAN CONSUMPTION, VICTORIA

Type of vegetable	Area sown (hectares)				Production (tonnes)			
	1985-86	1985-86 (a)	1986-87	1987-88	1985-86	1985-86 (a)	1986-87	1987-88
Potatoes	14,192	14,078	13,195	14,458	366,971	365,472	364,319	398,175
Onions	522	510	467	421	12,274	12,213	12,006	10,020
Carrots	980	964	1,142	1,097	31,041	30,776	36,233	33,449
Parsnips	179	177	1764.9	130	4,925	4,912	4,082	5,025
Beetroot	23	22	22	31	320	312	405	335
Tomatoes	2,705	2,682	2,935	2,884	99,857	99,473	115,007	125,111
French beans	481	457	6,493	712	2,329	2,280	3,201	3,880
Green peas -								
Market (b)	211	173	178	135	365	332	245	193
Factory (c)	1,007	996	1,131	1,547	1,838	1,805	3,758	5,584
Cabbages	728	720	821	723	25,060	24,828	28,639	28,055
Cauliflowers	1,070	1,064	1,095	1,009	39,581	39,507	30,198	28,626
Lettuce	1,269	1,262	1,226	1,259	27,600	27,496	30,305	32,460
Pumpkins	545	521	484	386	8,863	8,625	7,602	5651

(a) See footnote (b) to Table 6.7.

(b) Sold in pod.

(c) Shelled weight.

TABLE 6.23 TOBACCO PRODUCTION, VICTORIA

Season	Area	Production	Average yield per hectare
	hectares	tonnes (dry)	tonnes (dry)
1982-83	2,803	4,928	1.76
1983-84	2,823	5,856	2.07
1984-85	2,146	4,755	2.22
1985-86	1,652	3,711	2.25
1985-86 (a)	1,649	3,708	2.25
1986-87	1,819	3,975	2.19
1987-88	2,041	5,102	2.50

(a) See footnote (b) to Table 6.7.

TABLE 6.24 HOP PRODUCTION, VICTORIA

Season	Area	Production	Average yield per hectare
	hectares	tonnes (a)	tonnes
1982-83	499	491	0.98
1983-84	456	687	1.51
1984-85	420	554	1.32
1985-86	471	643	1.37
1985-86 (b)	467	640	1.37
1986-87	336	579	1.72
1987-88	382	695	1.82

(a) Dried weight.

(b) See footnote (b) to Table 6.7.

LIVESTOCK AND LIVESTOCK PRODUCTS

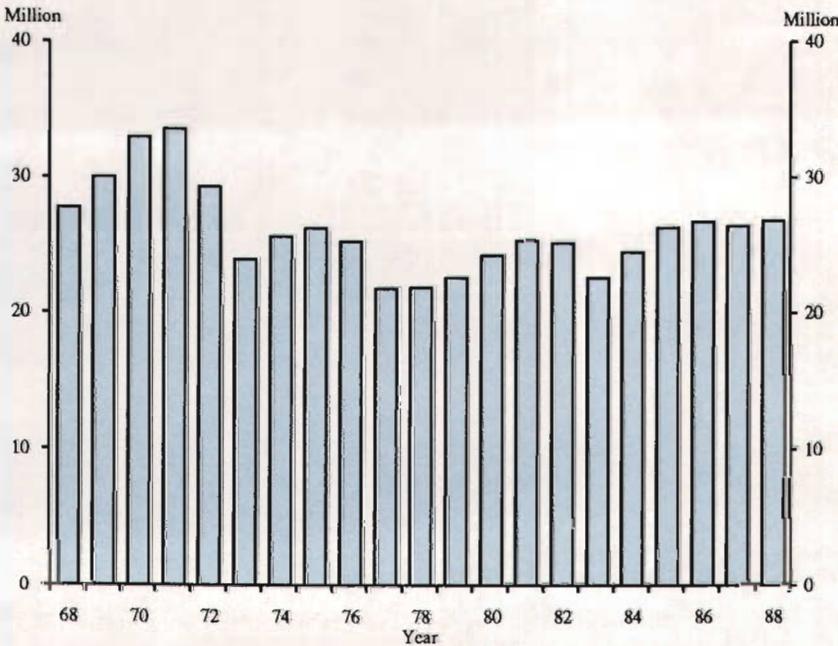
Sheep

At 31 March 1988, the Victorian sheep population was 27.0 million head, well below the 1971 peak of 33.8 million head. Almost 60 per cent of the State's sheep flock is located in the South Western, Central Highlands, and Wimmera Statistical Divisions.

Sheep breeds

Sheep can be divided broadly into 'wool' and 'meat' breeds. The distinction is necessarily an arbitrary one, since wool is an important source of income from ewes kept for prime lamb production, while mutton is produced mainly from surplus or aged sheep from 'woolgrowing' flocks.

SHEEP NUMBERS, VICTORIA, AT 31 MARCH



Lambing

The lambing performance of the Victorian flock has fluctuated according to seasonal conditions around a six year average of 86.1 lambs marked for each 100 ewes mated.

Victoria's largest lambing season occurred in 1970-71, when 12.7 million lambs were marked from 14.8 million ewes mated (86 per cent), but in 1983-84 reduced matings led to the smallest lambing season (8.4 million) since 1978-79. This increased sharply in 1984-85 when 10.4 million lambs were marked from 11.7 million ewes mated (89 per cent). Since then there has been a slight decline, with 9.4 million lambs marked from 10.7 million sheep mated (88 per cent) in 1987-88.

Mutton and lamb production

Mutton, the meat from adult sheep, is mainly produced from surplus sheep from the wool industry so that production patterns correspond closely to expansions and contractions in that industry. In 1987-88 mutton production was 73,000 tonnes, well down on the 1971-72 peak of 247,000 tonnes.

Prime lamb producers are found throughout the State. However, early to mid-season producers are distributed in a broad band across northern Victoria, including some irrigated areas. In addition, a considerable number of early lambs are brought from southern New South Wales for slaughter in Victoria. Mid to late-season producers are located mainly in the South Western, Central Highlands, Central Gippsland, and parts of the North Eastern Statistical Divisions of the State. In 1987-88, 126,000 tonnes of lamb were produced.

Meat cattle

The Victorian environment is very favorable for beef production with cattle able to graze on pasture throughout the year.

Most of the Victorian breeding herd are located in the South Western, Goulburn, North Eastern, East Gippsland, and Central Gippsland Statistical Divisions. A significant proportion of Victorian beef and veal production was exported during 1987-88, the main markets being the USA, Japan, Papua New Guinea, and Taiwan. During 1987-88, total Australian beef and veal exports decreased, as did exports to the main markets.

Milk cattle

Dairy farming in Victoria is largely confined to the higher rainfall areas of Gippsland, the Western District, and the northern irrigation areas. With minor fluctuations, milk cattle numbers have been gradually declining from the 1973 peak of 1,977,000. There were 1,436,000 milk cattle at 31 March 1988.

Pigs

Approximately two-thirds of the pig meat consumed in Victoria is produced in this State. The remaining one-third is acquired from other States.

The number of commercial establishments with pigs declined from 1,858 in 1982-83 to 1,212 in 1987-88. During the same period the average herd size increased from 208 to 361 pigs. This trend toward fewer but larger units is expected to continue, with the bulk of the industry becoming increasingly capital-intensive and established in grain growing areas. The number of pigs in Victoria at 31 March 1988 was 437,161.

Poultry

The trend in the Victorian egg industry has been towards larger specialised farms, with egg producers, hatcheries, and pullet growers using modern poultry housing, equipment, and labour saving machinery.

The main areas of commercial egg production in Victoria are centred on the outskirts of the Melbourne metropolitan area and in the Bendigo district, together with a large centre around Geelong, and substantial flocks in Ballarat, the Wimmera, Goulburn Valley, the north-east, and the La Trobe Valley.

Farms consisting of one person or one family usually manage 5,000 to 15,000 layers. There are, however, many larger farms employing labour with up to 40,000 layers, and a few with much bigger establishments.

In 1987-88, there were 71.8 million chickens, hens, stags, and ducks and drakes slaughtered for human consumption. The total dressed weight was 102,260 tonnes.

Most broiler farms range in capacity from 30,000 to 100,000 broilers, and with the present average of 5.5 batches of broiler chickens a year, these farms may produce from 165,000 to 550,000 broilers a year.

The main broiler production centres are located on the Mornington Peninsula, in areas south-east and east of Melbourne, and in the Geelong area - near the processing works and the main centres of consumption. Most of Victoria's production is consumed locally, with very little being exported.

Apiculture

Honey production in Victoria was 3,824 tonnes in 1987-88. The bulk of the honey produced is sold to large processors who clarify and pack the honey. About 50 per cent of the annual production is exported, chiefly to the United Kingdom.

TABLE 6.25 SELECTED LIVESTOCK NUMBERS, (a), VICTORIA
(^{'000})

Season	Cattle			Sheep	Pigs
	Dairy	Beef	Total		
1982-83	1,488	1,921	3,408	22,748	387
1983-84	1,535	1,952	3,487	24,632	404
1984-85	1,559	2,017	3,576	26,471	410
1985-86	1,534	2,187	3,720	26,895	432
1985-86 (a)	1,513	1,870	3,383	25,716	427
1986-87	1,464	2,014	3,478	26,586	432
1987-88	1,436	2,038	3,474	26,997	437

(a) See footnote (b) to Table 6.7.

TABLE 6.26 LIVESTOCK SLAUGHTERED, VICTORIA
(^{'000})

Types of livestock	1982-83	1983-84	1984-85	1985-86	1986-87	1987-88
Sheep	3,651	2,061	3,301	3,863	3,857	3,628
Lambs	6,390	6,207	6,777	7,987	6,634	7,162
Cattle and calves	2,668	1,992	1,971	2,045	2,081	2,054
Pigs	1,167	1,237	1,298	1,020	849	938

TABLE 6.27 SHEEP AND LAMBS BY STATISTICAL DIVISION, AT 31 MARCH 1988
(^{'000})

<i>Statistical division</i>	<i>Rams</i>	<i>Ewes</i>	<i>Wethers</i>	<i>Lambs</i>	<i>Total</i>
Melbourne	2	88	90	47	227
Barwon	20	748	356	342	1,466
South Western	86	3,840	1,986	1,932	7,844
Central Highlands	33	1,694	1,320	863	3,910
Wimmera	38	1,786	1,403	822	4,048
Northern Mallee	14	790	302	340	1,446
Loddon-Campaspe	30	1,413	1,087	673	3,203
Goulburn	30	1,316	690	496	2,531
North Eastern	8	324	158	132	623
East Gippsland	7	408	272	191	879
Central Gippsland	10	414	145	171	740
East Central	1	43	1	36	81
Total Victoria	279	12,865	7,808	6,045	26,997

TABLE 6.28 LAMBING, VICTORIA

<i>Season</i>	<i>Ewes mated</i>	<i>Lambs marked</i>	<i>Percentage of lambs marked to ewes mated</i>
	^{'000}	^{'000}	per cent
1982-83	11,018	9,246	84
1983-84	10,112	8,362	83
1984-85	11,744	10,446	89
1985-86	11,269	9,746	86
1985-86 (a)	10,801	9,344	86
1986-87	10,479	9,001	86
1987-88	10,662	9,399	88

(a) See footnote (b) to Table 6.7.

TABLE 6.29 SHEEP SHORN AND WOOL CLIPPED, VICTORIA

<i>Season</i>	<i>Number Shorn</i>		<i>Wool clipped (including crutchings)</i>		<i>Average</i>	
	<i>Sheep</i>	<i>Lambs</i>	<i>Sheep</i>	<i>Lambs</i>	<i>Per sheep</i>	<i>Per lamb</i>
	^{'000}	^{'000}	tonnes	tonnes	kg	kg
1982-83	22,390	5,920	101,556	8,403	4.5	1.4
1983-84	22,977	5,277	110,715	8,949	4.8	1.7
1984-85	25,784	8,306	129,728	12,744	5.0	1.5
1985-86	27,430	7,548	129,641	11,200	4.7	1.5
1985-86 (a) (b)	23,189	6,381	109,597	9,469	5.0	1.6
1986-87 (a) (b)	22,978	5,942	115,684	9,281	5.0	1.6
1987-88 (a) (b)	23,545	6,365	118,620	9,597	5.0	1.6

(a) Calculated directly from Census data collected at 31 March. Previous data were 'industry best estimates' compiled at 30 June - see publication 7211.0 for details.

(b) See footnote (b) to Table 6.7.

**TABLE 6.30 SHEEP SHORN AND WOOL CLIPPED BY STATISTICAL DIVISION,
SEASON 1987-88**

Statistical division	Number Shorn		Wool clipped (including crutchings)		Average	
	Sheep	Lambs	Sheep	Lambs	Per sheep	Per lamb
	'000	'000	tonnes	tonnes	kg	kg
Melbourne	187	48	962	69	5.0	1.4
Barwon	1,282	370	6,109	536	4.8	1.4
South Western	7,097	2,084	33,853	3,015	4.8	1.4
Central Highlands	3,424	801	16,738	1,240	4.9	1.5
Wimmera	3,459	857	19,496	1,373	5.6	1.6
Northern Mallee	1,084	333	6,135	561	5.7	1.7
Loddon-Campaspe	2,771	747	15,217	1,151	5.0	1.5
Goulburn	2,245	583	10,687	861	4.0	1.5
North Eastern	540	145	2,420	202	4.0	1.4
East Gippsland	794	174	3,890	234	4.0	1.3
Central Gippsland	615	205	2,905	325	4.0	1.6
East Central	46	18	208	29	4.0	1.6
Total Victoria	23,545	6,365	118,620	9,597	5.0	1.0

TABLE 6.31 TOTAL WOOL PRODUCTION, VICTORIA

Season	Clip	Stripped from or exported on skins (greasy)	Total quantity (greasy)
	tonnes	tonnes	tonnes
1982-83	109,959	22,486	132,445
1983-84	119,664	22,409	142,074
1984-85	142,472	24,816	167,288
1985-86	140,841	30,067	170,908
1985-86 (a)	135,102	n.a.	n.a.
1986-87	124,965	133,728	1158,693
1987-88	128,217	32,034	160,251

(a) See footnote (b) to Table 6.7.

**TABLE 6.32 DISTRIBUTION OF MEAT CATTLE BY STATISTICAL DIVISION
AT 31 MARCH 1988
('000)**

Statistical division	Bulls for service		Cows and heifers	Calves under 1 year	Other (a)	Total
	1 year and over	Under 1 year				
Melbourne	2	1	54	32	14	104
Barwon	2	1	47	25	16	92
South Western	12	4	234	103	73	426
Central Highlands	2	1	43	21	12	78
Wimmera	1	-	18	11	5	36
Northern Mallee	1	-	25	18	7	51
Loddon-Campaspe	3	1	58	54	22	139
Goulburn	7	2	139	80	39	266
North Eastern	5	1	147	77	51	282
East Gippsland	4	1	88	44	13	150
Central Gippsland	7	2	153	94	88	344
East Central	2	-	32	19	16	69
Total Victoria	49	15	1,039	578	357	2,038

(a) Steers and bullocks, 1 year and over.

MEAT CATTLE NUMBERS, VICTORIA, AT 31 MARCH

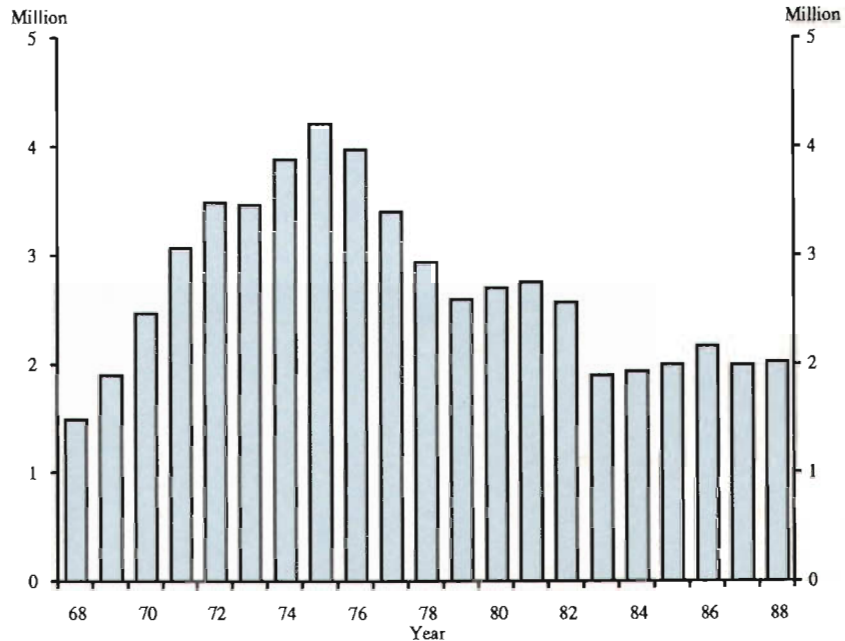


TABLE 6.33 DISTRIBUTION OF MILK CATTLE BY STATISTICAL DIVISION
AT 31 MARCH 1988
(^{'000})

Statistical division	Bulls for service		Cows and heifers for milk and cream				House cows and heifers	Total
	1 year and over	Under 1 year	Cows in milk and dry	Heifers				
				1 year and over	Under 1 year			
Melbourne	-	-	18	5	4	-	27	
Barwon	1	-	69	17	16	-	104	
South Western	4	1	199	48	43	1	297	
Central Highlands	-	-	6	2	1	-	10	
Wimmera	-	-	1	1	-	1	3	
Northern Mallee	-	-	22	5	6	-	34	
Loddon-Campaspe	1	-	88	22	21	-	134	
Goulburn	3	1	203	48	47	-	304	
North Eastern	1	-	41	10	8	-	61	
East Gippsland	1	-	48	12	11	-	72	
Central Gippsland	4	1	234	56	51	-	346	
East Central	-	-	29	7	6	-	43	
Total Victoria	17	5	960	233	216	4	1,436	

TABLE 6.34 MILK PRODUCTION, VICTORIA

<i>Year ended 30 June -</i>	<i>Million litres</i>
1983	3,164
1984	3,425
1985	3,540
1986	3,575
1987	3,692
1988	3,649

TABLE 6.35 PIGS AND PIG KEEPERS BY STATISTICAL DIVISION
AT 31 MARCH 1988

<i>Statistical division</i>	<i>Boars</i>	<i>Breeding sows</i>	<i>All other</i>	<i>Total pigs</i>	<i>Pig keepers</i>
Melbourne	218	2,664	20,841	23,723	26
Barwon	91	1,037	7,769	8,897	28
South Western	167	1,994	18,307	20,468	102
Central Highlands	132	1,874	16,709	18,715	41
Wimmera	366	4,773	34,686	39,825	214
Northern Mallee	305	3,494	26,767	30,566	189
Loddon-Campaspe	1,233	19,248	168,159	188,640	243
Goulburn	709	9,410	66,703	76,822	190
North Eastern	171	2,018	15,009	17,198	83
East Gippsland	39	324	1,919	2,282	26
Central Gippsland	95	1,453	7,511	9,059	63
East Central	13	151	802	966	7
Total Victoria	3,539	48,440	385,182	437,161	1,212

TABLE 6.36 POULTRY SLAUGHTERED FOR HUMAN
CONSUMPTION, VICTORIA
(^{'000})

<i>Year ended 30 June-</i>	<i>Chickens (i.e. broilers, fryers, or roasters)</i>	<i>Hens and stags</i>	<i>Ducks and drakes</i>
1983	42,315	2,330	389
1984	46,061	2,308	444
1985	55,995	2,264	452
1986	61,644	2,614	616
1987	62,466	2,441	637
1988	68,325	2,829	637

TABLE 6.37 DRESSED WEIGHT OF POULTRY SLAUGHTERED,
FRESH AND FROZEN (a) (b), VICTORIA
(^{'000} kg)

<i>Year ended 30 June-</i>	<i>Chickens (i.e. broilers, fryers, or roasters)</i>	<i>Hens and stags</i>	<i>Ducks and drakes</i>
1983	51,960	4,051	634
1984	61,503	4,249	750
1985	75,086	3,337	865
1986	84,434	4,029	1,132
1987	84,646	3,959	1,202
1988	96,279	4,655	1,326

- (a) Dressed weight of whole birds, pieces, and giblets intended for sale as reported by producers.
 (b) Fresh: sold immediately after slaughter or chilled for sale soon after. Frozen: frozen hard for storage of indefinite duration.

TABLE 6.38 EGGS - TOTAL RECORDED PRODUCTION, VICTORIA

<i>Year</i>	<i>Dozens</i>
1982-83	52,346,946
1983-84	49,960,839
1984-85	49,416,391
1985-86	50,114,360
1986-87	49,369,871
1987-88	50,566,000

Source: Victorian Egg Marketing Board

TABLE 6.39 BEEHIVES, HONEY, AND BEESWAX, VICTORIA

<i>Year ended 30 June-</i>	<i>Beekkeepers</i>	<i>Production</i>		
		<i>Hives</i>	<i>Honey</i>	<i>Beeswax</i>
	number	number	tonnes	tonnes
1983	406	89,796	2,705	48
1984	381	85,596	3,603	65
1985	436	95,130	4,224	89
1986	456	101,002	4,210	81
1986 (a)	107	58,116	3,022	58
1987	111	58,948	3,107	52
1988	145	59,377	3,824	64

(a) See footnote (b) to Table 6.7.

REFERENCES

ABS publications

- Agricultural Industries, Australia, Structure of Operating Units* (7102.0)
Principal Agricultural Commodities, Australia, Preliminary (7111.0)
Principal Agricultural Commodities, Victoria, Preliminary (7111.2)
Selected Agricultural Commodities, Australia, Preliminary (7112.0)
Shearing and Wool Production Forecast, Australia, Preliminary (7210.0)
Sheep Numbers, Shearing and Wool Production Forecast, Australia, Preliminary (7211.0)
Livestock Products, Australia (7215.0)
Livestock and Livestock Products, Victoria (7221.2)
Crops and Pastures, Victoria (7321.2)
Fruit, Victoria (7322.2)
Apples and Pears in Cool Stores, Victoria (7323.2)
Agricultural Land Use and Selected Inputs, Victoria (7411.2)
Value of Agricultural Commodities Produced, Victoria (7501.2)
Value of Selected Agricultural Commodities Produced, Australia, Preliminary (7502.0)
Value of Agricultural Commodities Produced, Australia (7503.0)

Non-ABS source

Victorian Egg Marketing Board